

日本

WE DREAM YOUR DREAMS  
想你所想

自悠行套票

Travel Package

License no. 352959

# 4 天北海道滑雪自悠行套票

01 Dec 2014 – 20 Apr 2015

201406028\_CTSW2CX\_V1

CATHAY PACIFIC

**二世古** 從十二月中旬到三月，大部分時間都會天天下雪，這裡擁有全日本最出名、特別鬆軟細滑的“粉雪”，每逢冬季便吸引眾多遊人前來享受滑雪樂。

比羅夫(ひらふ/Grand-Hirafu)度假公寓、獨立屋，適合三五知己或舉家同住。這些度假公寓和獨立屋家電設備齊全，可以下廚煮食、洗衣服，給你一個家的感覺。每種房型都有獨特的景觀，山景、比羅夫雪景...各有特色。

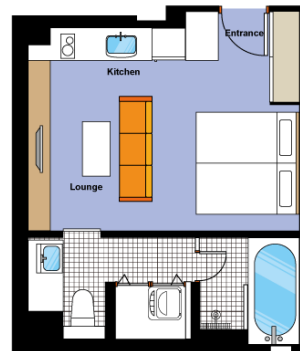


Early Bird



包 2 天滑雪証  
All Mountain

Setsugetsu Terrace  
(Studio) 35 sqm



Apartment	Room Type	Period of stay	Adult	Child	Extension (per night)		
			2 Pax Share	Extra Bed	Studio	Extra Bed	
Setsugetsu Terrace <a href="http://hanazoniseko.com/npc/accommodation/apartments/setsugetsu-terrace/">http://hanazoniseko.com/npc/accommodation/apartments/setsugetsu-terrace/</a>	Studio	<b>Booking must be made and full paid on or before 31Aug14</b>					
		1-19Dec14, 1Mar-20Apr15	<b>9,230</b> <del>10,050</del>	-	1,570	-	
		1Dec14-20Apr15	<b>10,050</b>	-	2,120	-	
			Hotel Surcharge (per room per night): 20-26Dec14, 3Jan-13Feb15 Twin HKD590 / 27Dec14-2Jan15, 14-28Feb15 Twin HKD710				

Min. 5 nights stay for check in during 20Dec14-28Feb15

All rooms incl. standard clean towels change and rubbish removed every 2<sup>nd</sup> day (not including Arrival and Departure days)



Kizuna  
(One-Bedroom)

56 sqm



Apartment	Room Type	Period of stay	Adult	Child	Extension (per night)		
			2 Pax Share	Extra Bed	One-Bedroom	Extra Bed	
Kizuna <a href="http://hanazoniseko.com/npc/accommodation/apartments/kizuna/">http://hanazoniseko.com/npc/accommodation/apartments/kizuna/</a>	One-Bedroom	<b>Booking must be made and full paid on or before 31Aug14</b>					
		1-19Dec14, 1Mar-20Apr15	<b>9,680</b> <del>10,700</del>	-	1,870	-	
		1Dec14-20Apr15	<b>10,700</b>	-	2,550	-	
			Hotel Surcharge (per room per night): 20-26Dec14, 3Jan-13Feb15 Twin HKD720 / 27Dec14-2Jan15, 14-28Feb15 Twin HKD870				

Min. 5 nights stay for check in during 20Dec14-28Feb15

All rooms incl. standard clean towels change and rubbish removed every 2<sup>nd</sup> day (not including Arrival and Departure days)

香港本社  
旺角 中環

旺角總行 Mongkok Head Office  
T: (852) 3175-3888  
F: (852) 3011-5100  
香港九龍旺角廣東道982號嘉富商業中心2604室  
Unit 2604, Prosperity Centre, 982 Canton Road,  
Mong Kok, Kln., H.K.

中環分行 Central Branch  
T: (852) 3105-3580  
F: (852) 3105-1682  
香港中環夏慤道10號和記大廈商場125號舖  
Shop125, 1/F., Hutchison House, 10 Harcourt  
Road, Central, H.K.



傲遊天地

BLISS TRAVEL

日本

WE DREAM YOUR DREAMS  
想你所想

自悠行套票

Travel Package

License no.: 352959

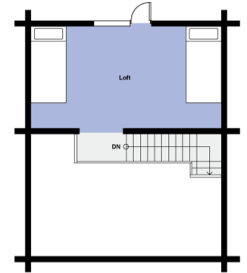
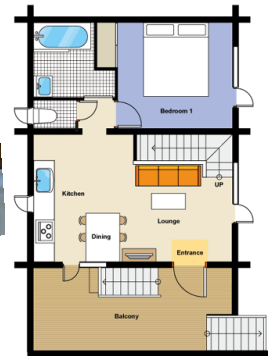
# 4 天北海道滑雪自悠行套票

01 Dec 2014 – 20 Apr 2015

201406028\_CTSW2CX\_V1

CATHAY PACIFIC

## Nupuri Cottage (Two-Bedroom)



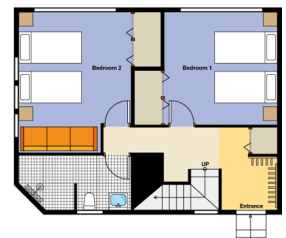
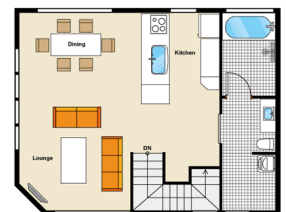
98 sqm

Apartment	Room Type	Period of stay	Adult	Child	Extension (per night)		
			4 Pax Share	Extra Bed	Two-Bedroom	Extra Bed	
Nupuri Cottage <a href="http://hanazoniseko.com/npc/accommodation/houses/nupuri-cottage/">http://hanazoniseko.com/npc/accommodation/houses/nupuri-cottage/</a>	One-Bedroom+Loft	<b>Booking must be made and full paid on or before 31Aug14</b>					
		1-19Dec14, 1Mar-20Apr15	<del>8,430</del> <b>8,920</b>	6,330	1,800 <del>2,440</del>	500	
		1Dec14-20Apr15	<b>8,920</b>	6,330	2,440	500	
			Hotel Surcharge (per room per night): 20-26Dec14, 3Jan-13Feb15 Two-Bedroom HKD1250 / 27Dec14-2Jan15, 14-28Feb15 Two-Bedroom HKD1420				

Min. 5 nights stay for check in during 20Dec14-28Feb15

All rooms incl. standard clean towels change and rubbish removed every 2<sup>nd</sup> day (not including Arrival and Departure days)

## Hana + Jo (Two-Bedroom) 200 sqm



Apartment	Room Type	Period of stay	Adult	Child	Extension (per night)		
			4 Pax Share	Extra Bed	Two-Bedroom	Extra Bed	
Hana + Jo <a href="http://hanazoniseko.com/npc/accommodation/townhouse/hana-and-jo/">http://hanazoniseko.com/npc/accommodation/townhouse/hana-and-jo/</a>	Two-Bedroom	<b>Booking must be made and full paid on or before 31Aug14</b>					
		1-19Dec14, 1Mar-20Apr15	<del>8,660</del> <b>9,240</b>	6,330	2,100 <del>2,870</del>	500	
		1Dec14-20Apr15	<b>9,240</b>	6,330	2,870	500	
			Hotel Surcharge (per room per night): 20Dec14-28Feb15 Two-Bedroom HKD960				

Min. 5 nights stay for check in during 20Dec14-28Feb15

All rooms incl. standard clean towels change and rubbish removed every 2<sup>nd</sup> day (not including Arrival and Departure days)

香港本社  
旺角 旺角/中環

旺角總行 Mongkok Head Office

T: (852) 3175-3888  
F: (852) 3011-5100  
香港九龍旺角廣東道982號嘉富商業中心2604室  
Unit 2604, Prosperity Centre, 982 Canton Road, Mong Kok, Kln., H.K.

中環分行 Central Branch

T: (852) 3105-3580  
F: (852) 3105-1682  
香港中環夏慤道10號和記大廈商場125號舖  
Shop125, 1/F., Hutchison House, 10 Harcourt Road, Central, H.K.

www.bliss-travel.com.hk @ enquiry@bliss-travel.com.hk 傲遊天地 blisstravel -852 6379 4984 blisstravel



傲遊天地

BLISS TRAVEL

日本

WE DREAM YOUR DREAMS  
想你所想

自悠行套票

Travel Package

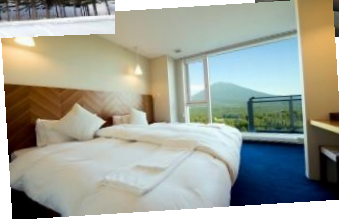
Licence no.: 352959

# 4 天北海道滑雪自悠行套票

01 Dec 2014 – 20 Apr 2015

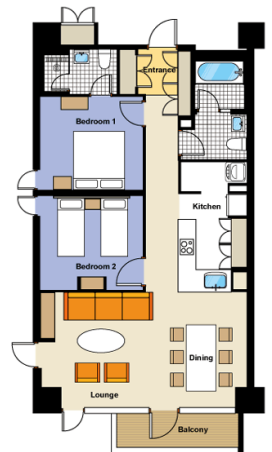
201406028\_CTSW2CX\_V1

CATHAY PACIFIC



## Niseko Landmark View (Two-Bedroom)

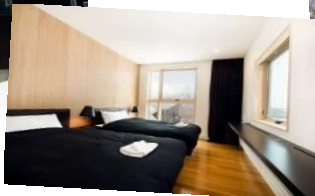
91 sqm



Apartment	Room Type	Period of stay	Extension (per night)			
			Adult 4 Pax Share	Child Extra Bed	Two-Bedroom	Extra Bed
Niseko Landmark View <a href="http://hanazoniseko.com/npc/accommodation/apartments/niseko-landmark-view/">http://hanazoniseko.com/npc/accommodation/apartments/niseko-landmark-view/</a>	Two-Bedroom Deluxe	1-19Dec14, 1Mar-20Apr15	9,190 <del>9,990</del>	6,330	2,800 <del>3,880</del>	500
		1Dec14-20Apr15	9,990	6,330	3,880	500
		Hotel Surcharge (per room per night): 20-26Dec14, 3Jan-13Feb15 Two-Bedroom HKD1230 / 27Dec14-2Jan15, 14-28Feb15 Two-Bedroom HKD1370				

Min. 5 nights stay for check in during 20Dec14-28Feb15

All rooms incl. standard clean towels change and rubbish removed every 2<sup>nd</sup> day (not including Arrival and Departure days)



## Forest Estate (Three-Bedroom)

143 sqm



Apartment	Room Type	Period of stay	Extension (per night)			
			Adult 6 Pax Share	Child Extra Bed	Three-Bedroom	Extra Bed
Forest Estate <a href="http://hanazoniseko.com/npc/accommodation/houses/forest-estate/">http://hanazoniseko.com/npc/accommodation/houses/forest-estate/</a>	Three-Bedroom	1-19Dec14, 1Mar-20Apr15	8,620 <del>9,190</del>	6,330	2,930 <del>4,070</del>	500
		1Dec14-20Apr15	9,190	6,330	4,070	500
		Hotel Surcharge (per room per night): 20-26Dec14, 3Jan-13Feb15 Three-Bedroom HKD1530 / 27Dec14-2Jan15, 14-28Feb15 Three-Bedroom HKD1750				

Min. 5 nights stay for check in during 20Dec14-28Feb15

All rooms incl. standard clean towels change and rubbish removed every 2<sup>nd</sup> day (not including Arrival and Departure days)

香港本社  
旺角 中環  
日本支社  
大阪

旺角總行 Mongkok Head Office  
T: (852) 3175-3888  
F: (852) 3011-5100  
香港九龍旺角廣東道982號嘉富商業中心2604室  
Unit 2604, Prosperity Centre, 982 Canton Road, Mong Kok, Kln., H.K.

中環分行 Central Branch  
T: (852) 3105-3580  
F: (852) 3105-1682  
香港中環畢打道10號和記大廈商場125號舖  
Shop125, 1/F., Hutchison House, 10 Harcourt Road, Central, H.K.



傲遊天地

BLISS TRAVEL

日本

WE DREAM YOUR DREAMS  
想你所想

自悠行套票

Travel Package

License no.: 352959

# 4 天北海道滑雪自悠行套票

01 Dec 2014 – 20 Apr 2015

201406028\_CTSW2CX\_V1

CATHAY PACIFIC



**Kizuna**  
(Three-Bedroom) 132 sqm

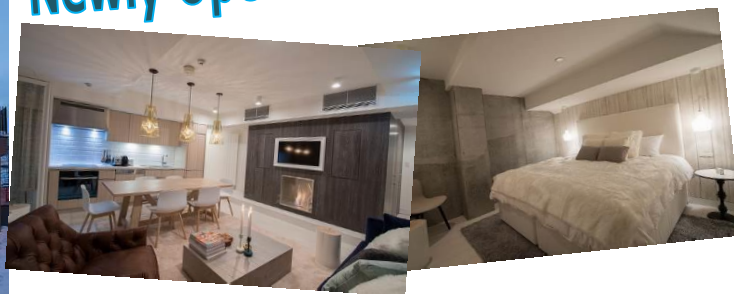


Apartment	Room Type	Period of stay	Extension (per night)			
			Adult 6 Pax Share	Child Extra Bed	Three-Bedroom	Extra Bed
<b>Kizuna</b> <a href="http://hanazoniseko.com/npc/accommodation/apartments/kizuna/">http://hanazoniseko.com/npc/accommodation/apartments/kizuna/</a>	Three-Bedroom Penthouse	1-19Dec14, 1Mar-20Apr15	<b>9,570</b>	-	4,820	-
		1Dec14-20Apr15	<b>10,540</b>	-	6,760	-
		Hotel Surcharge (per room per night): 20-26Dec14, 3Jan-13Feb15 Three-Bedroom HKD2010 / 27Dec14-2Jan15, 14-28Feb15 Three-Bedroom HKD2440				

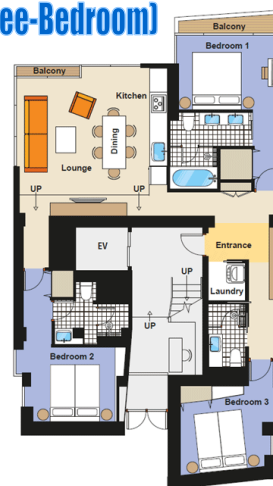
Min. 5 nights stay for check in during 20Dec14-28Feb15

All rooms incl. standard clean towels change and rubbish removed every 2<sup>nd</sup> day (not including Arrival and Departure days)

## Newly Open in Dec14



**Loft**  
(Three-Bedroom) 121 sqm



Apartment	Room Type	Period of stay	Extension (per night)			
			Adult 6 Pax Share	Child Extra Bed	Three-Bedroom	Extra Bed
<b>Loft</b> <a href="http://hanazoniseko.com/npc/accommodation/prestige-collection/the-loft-niseko/">http://hanazoniseko.com/npc/accommodation/prestige-collection/the-loft-niseko/</a>	Loft 201 (Three-Bedroom)	1Dec14-20Apr15	<b>10,330</b>	-	6,340	-
		Hotel Surcharge (per room per night): 20-26Dec14, 3Jan-13Feb15 Three-Bedroom HKD1700 / 27Dec14-2Jan15, 14-28Feb15 Three-Bedroom HKD1930				

Min. 5 nights stay for check in during 20Dec14-28Feb15

All rooms incl. standard clean towels change and rubbish removed every 2<sup>nd</sup> day (not including Arrival and Departure days)

香港本社  
旺角 孟角 / 中環 中央

旺角總行 Mongkok Head Office  
T: (852) 3175-3888  
F: (852) 3011-5100  
香港九龍旺角廣東道982號嘉富商業中心2604室  
Unit 2604, Prosperity Centre, 982 Canton Road, Mong Kok, Kln., H.K.

中環分行 Central Branch  
T: (852) 3105-3580  
F: (852) 3105-1682  
香港中環夏慤道10號和記大廈商場125號舖  
Shop125, 1/F., Hutchison House, 10 Harcourt Road, Central, H.K.



傲遊天地

BLISS TRAVEL

日本

WE DREAM YOUR DREAMS  
想你所想

自悠行套票

Travel Package

License no.: 352959

# 4 天北海道滑雪自悠行套票

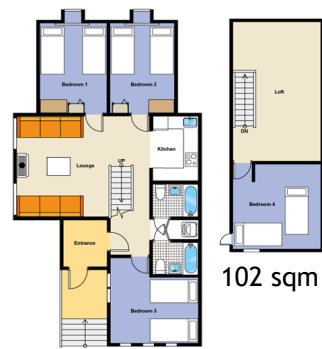
01 Dec 2014 – 20 Apr 2015

201406028\_CTSW2CX\_V1

CATHAY PACIFIC



## Jurin (Four-Bedroom)



Apartment	Room Type	Period of stay	Adult	Child	Extension (per night)	
			8 Pax Share	Extra Bed	Four-Bedroom	Extra Bed
Jurin <a href="http://hanazoniseko.com/npc/accommodation/houses/jurin/">http://hanazoniseko.com/npc/accommodation/houses/jurin/</a>	Four-Bedroom	1-19Dec14, 1Mar-20Apr15	8,210	6,330	2,700	500
			<del>8,600</del>		<del>3,740</del>	
		1Dec14-20Apr15	8,600	6,330	3,740	500
			Hotel Surcharge (per room per night): 20Dec14-28Feb15 Four-Bedroom HKD1220			

Min. 5 nights stay for check in during 20Dec14-28Feb15

All rooms incl. standard clean towels change and rubbish removed every 2<sup>nd</sup> day (not including Arrival and Departure days)



## Jindabyne (Five-Bedroom)



Apartment	Room Type	Period of stay	Adult	Child	Extension (per night)	
			10 Pax Share	Extra Bed	Five-Bedroom	Extra Bed
Jindabyne <a href="http://hanazoniseko.com/npc/accommodation/houses/jindabyne/">http://hanazoniseko.com/npc/accommodation/houses/jindabyne/</a>	Five-Bedroom	1-19Dec14, 1Mar-20Apr15	8,150	6,330	3,120	500
			<del>8,520</del>		<del>4,330</del>	
		1Dec14-20Apr15	8,520	6,330	4,330	500
			Hotel Surcharge (per room per night): 20Dec14-28Feb15 Five-Bedroom HKD1760			

Min. 5 nights stay for check in during 20Dec14-28Feb15

All rooms incl. standard clean towels change and rubbish removed every 2<sup>nd</sup> day (not including Arrival and Departure days)

香港本社  
旺角 中環

旺角總行 Mongkok Head Office

T: (852) 3175-3888  
F: (852) 3011-5100  
香港九龍旺角廣東道982號嘉富商業中心2604室  
Unit 2604, Prosperity Centre, 982 Canton Road, Mong Kok, Kln., H.K.

中環分行 Central Branch

T: (852) 3105-3580  
F: (852) 3105-1682  
香港中環夏慤道10號和記大廈商場125號舖  
Shop125, 1/F., Hutchison House, 10 Harcourt Road, Central, H.K.

www.bliss-travel.com.hk | enquiry@bliss-travel.com.hk | 傲遊天地 blisstravel | +852 6379 4984 | blisstravel



傲遊天地

BLISS TRAVEL



WE  
DREAM  
YOUR  
DREAMS  
想 你 所 想

自悠行套票

Travel Package

License no.: 352959

# 4 天北海道滑雪自悠行套票

01 Dec 2014 – 20 Apr 2015

201406028\_CTSW2CX\_V1



Please state "CX GV2 fare IN (date) OUT (date) at (hotel name)" at OSI field in PNR.

Air Fare Surcharge for High Season					
Date	Applicable Flights	Class	Validity	Adult	Child
1-19Dec14, 27Dec14-13Feb15, 22Feb-1Apr15, 7-20Apr15	Valid on any CX operating flights	L	3-17 days (extended to 21 days surcharge HKD1000 per person)	NIL	NIL
20-26Dec14, 2-6Apr15				3170	2370
14-21Feb15				3720	2790
Premium Economy Air Fare Surcharge					
1-19Dec14, 27Dec14-13Feb15, 22Feb-1Apr15, 7-20Apr15	Valid on any CX operating flights	E	3-17 days (extended to 21 days surcharge HKD1000 per person)	1050	780
20-26Dec14, 2-6Apr15				4720	3540
14-21Feb15				5270	3950
Business Class Air Fare Surcharge					
1-19Dec14, 27Dec14-13Feb15, 22Feb-1Apr15, 7-20Apr15	Valid on any CX operating flights	I	3-17days	3990	2990
20-26Dec14, 14-21Feb15, 2-6Apr15				7500	5620

Please call us for open jaw and domestic add-on options.

以上價格包括：

- 國泰航空來回香港至札幌經濟客位機票 (電子機票)
- 三晚連續住宿於度假公寓
- 2 日滑雪纜車通行證 (適用於 All Mountain)
- 飛行保險港幣 1,000,000 元 (最多 14 天)

備註：

- 訂位代號 / 機票有效期：(請參閱上列附加費表)
- 適用於 CX 營運之航班 / 累積飛行哩數之訂位請瀏覽 [www.asiamiles.com](http://www.asiamiles.com)
- 酒店住宿必須於 15 年 4 月 20 日或之前完成。(特別註明除外)
- 最少兩人(支付成人價錢)同行，所有同行客人之行程、航班必須相同(於同一電腦代號(PNR)內訂位)，並必須於去程及回程時一同辦理登機手續。
- 以上價錢於旺季及交易會期間或需繳付附加費。
- 如只預訂房間或作不連續住宿，酒店價目及條款或會有所調整及變動。
- 旅遊套餐不得更改航班 / 日期 / 行程及不可退款。
- 以上價格不包括所有有關稅項及附加費。價格如有任何變更恕不另行通知

香港本社  
旺角 モコク / 中環セントラル

日本本社  
大阪

旺角總行 **Mongkok Head Office**  
T: (852) 3175-3888  
F: (852) 3011-5100  
香港九龍旺角廣東道982號嘉富商業中心2604室  
Unit 2604, Prosperity Centre, 982 Canton Road,  
Mong Kok, Kln., H.K.

中環分行 **Central Branch**  
T: (852) 3105-3580  
F: (852) 3105-1682  
香港中環夏慤道10號和記大廈商場125號舖  
Shop125, 1/F., Hutchison House, 10 Harcourt  
Road, Central, H.K.



傲遊天地

BLISS TRAVEL